



TRIPTYCH PENTHOUSE 2805

A penthouse that embodies a utopian future

- 4 bedroom, 306 sqm, level 28 penthouse
- North facing with stunning panoramic city views
- Sustainable development
- Stunning landscaped gardens
- Full time concierge
- Open-plan kitchen equipped with Miele appliances
- 25 m indoor / outdoor lap pool
- State of the art gym
- Parking for 3 cars + storage
- Located on the edge of the CBD, near The Arts Centre, Royal Botanical Gardens, MCG, Crown Casino and the Rod Laver Arena

This one-of-a-kind building reinvents inner city living with a focus on sustainability, nature and community. Located right behind Melbourne's iconic Arts Centre, this beautiful building rises above the Plane trees of St Kilda Road and casts a glorious shadow of modernity and imagination. Sustainable building practices and environmentally conscious materials stand as pillars of this innovative design. Triptych apartments are like no other.

A verdant walled garden makes up the building's facade and echoes what lies beyond. Inspirationally designed by Jamie Durie, the vertical garden features 43 different native Australian plants. The dramatic entrance hall, adorned with masterpieces by Australian artist Robert Owen, is where a concierge is on hand to solve life's everyday problems.

As you step out onto the upper most floor, beyond the 3-storey vertical atrium, a vast shared space awaits. This communal area is

Price \$3.75 million with bonus tenancy

 3
  4
  3.5
  3
  306.6 sqm



luxury properties



unique
ESTATES



masterfully designed to bring the beauty of nature within: the open landing is saturated with natural light and freshness. From these lofty heights residents are welcomed with stunning views of the bay.

With a fresh take on the classic front yard, your penthouse has a gated entrance leading to a front door. This personal foyer creates a sense of intimacy and privacy. Walking into this sublime abode, an expansive living area awaits. With environmentally conscious bamboo flooring throughout, the living area boasts spectacular views of St Kilda Road, the Yarra and the Botanical Gardens.

The northern wing encompasses the master suite, with generous bedroom, the master bathroom, walk-through salon and access to the balcony. The thoughtful positioning of the master suite means you'll be guaranteed the utmost privacy at all times.

Returning to the center of the penthouse, the open-plan kitchen, fully equipped with Miele appliances will satisfy the most creative

chefs. Everything necessary for entertaining is right at the host's fingertips, from the butler's pantry to the nearby wine cellar. As you make your way through this generous space, you'll find a second living area and a study, which could easily be converted into a home cinema. A spaciouly proportioned laundry is fitted with Miele washer and dryer and has its own external entrance.

In the southern wing of the apartment there are three generously sized bedrooms, one with en-suite; an additional bathroom and powder room.

Triptych Penthouse 2805 is a unique combination of aesthetics and sustainable living. You can feel at home and at peace with the knowledge that at its heart Triptych is kind to the environment and nurtures a sense of community.

This uniquely luxurious penthouse apartment is price at \$3.75 million with the inclusion of a 2 year tenancy at \$2,500 per week unfurnished.

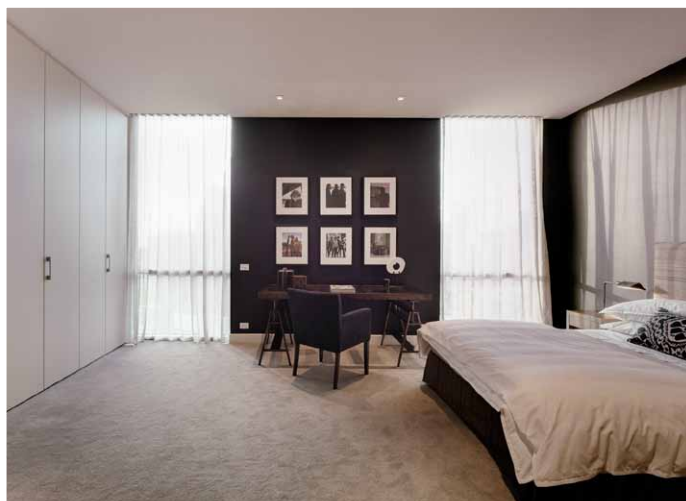
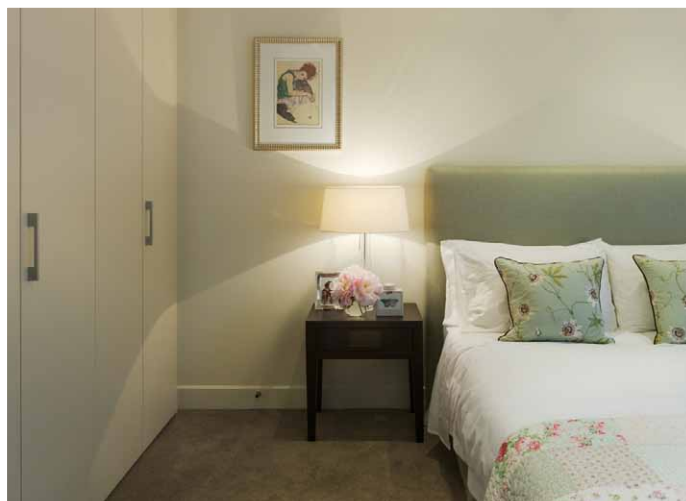
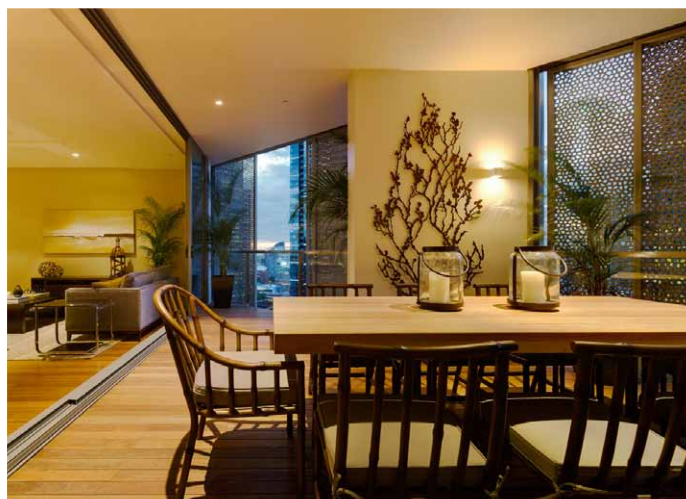
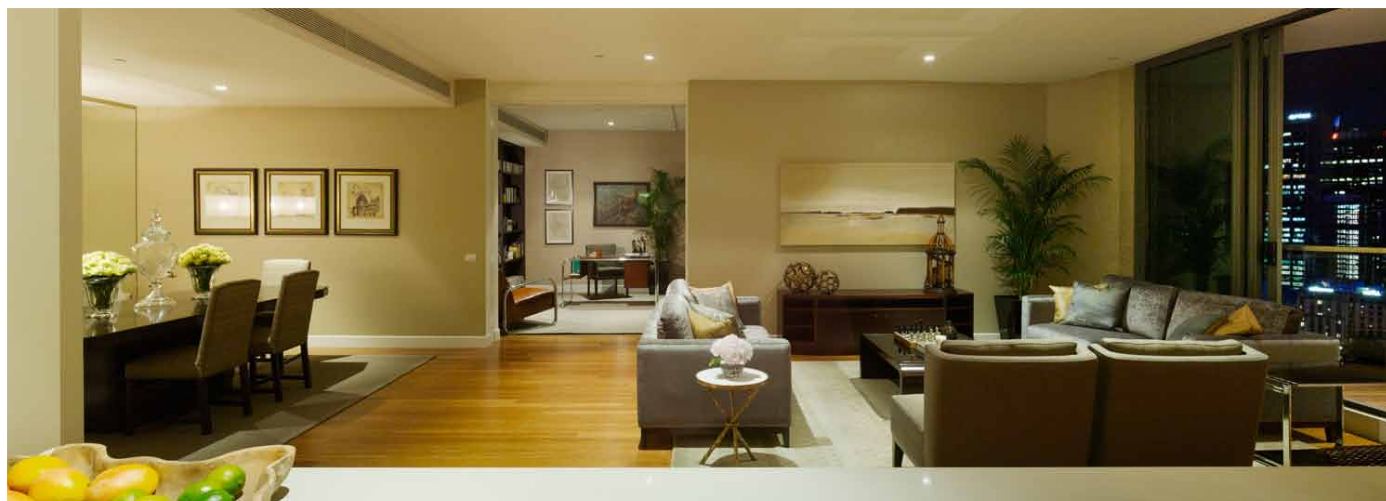
For more information or to arrange an inspection please call Nicolette van Wijngaarden
M 0411 144 877 P 1300 911 720 E nicolette@uniqueestates.com.au
Website www.uniqueestates.com.au

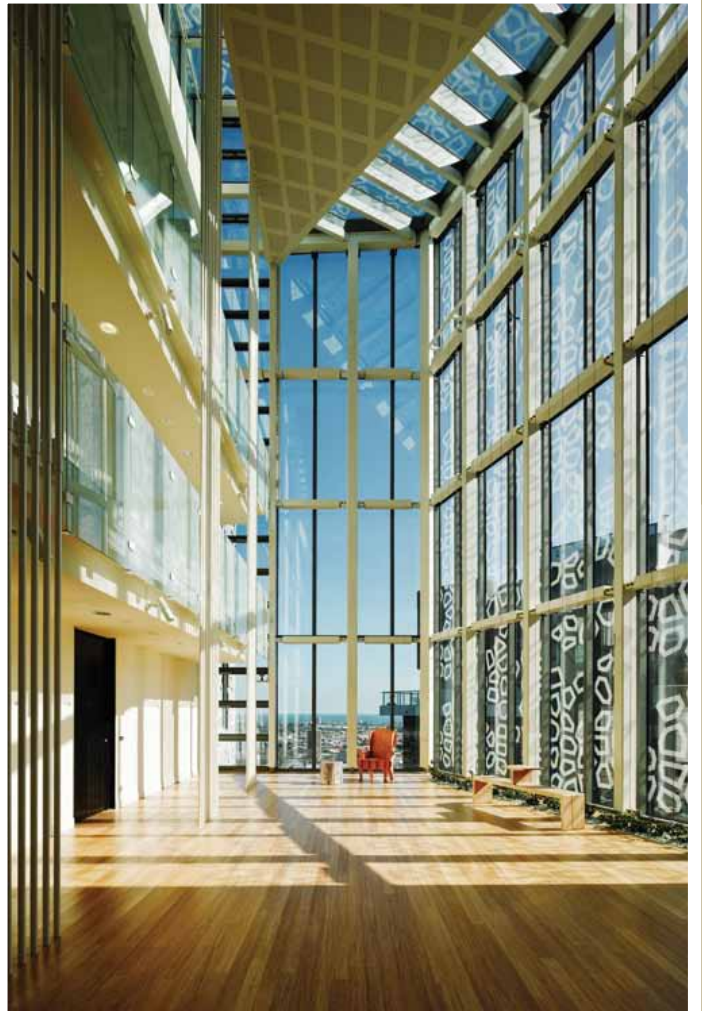
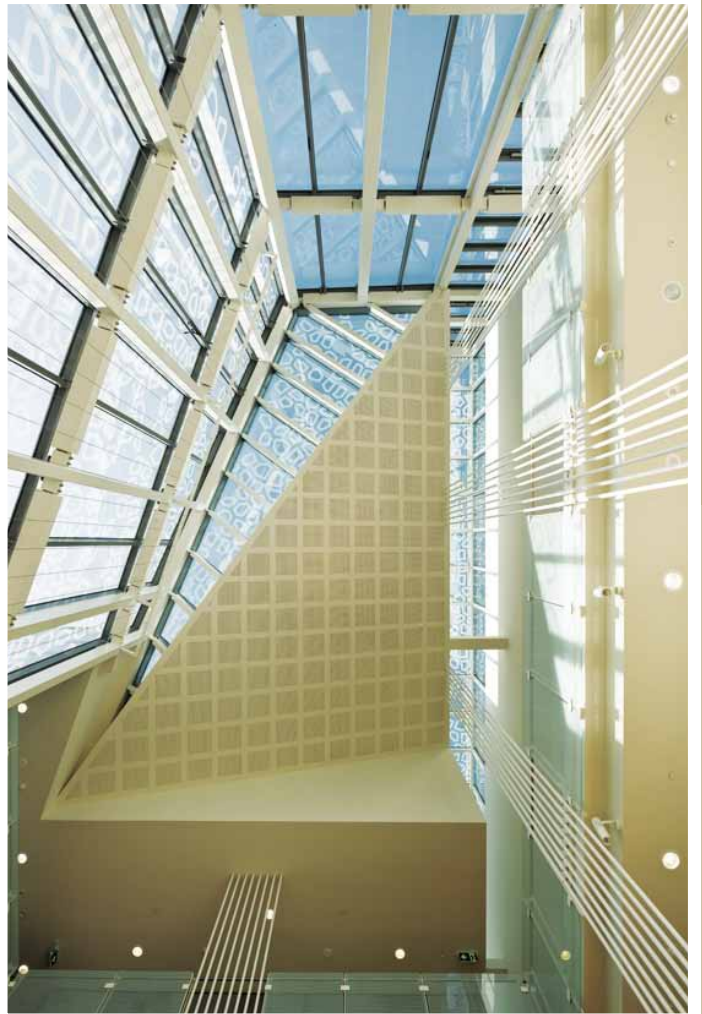


luxury properties



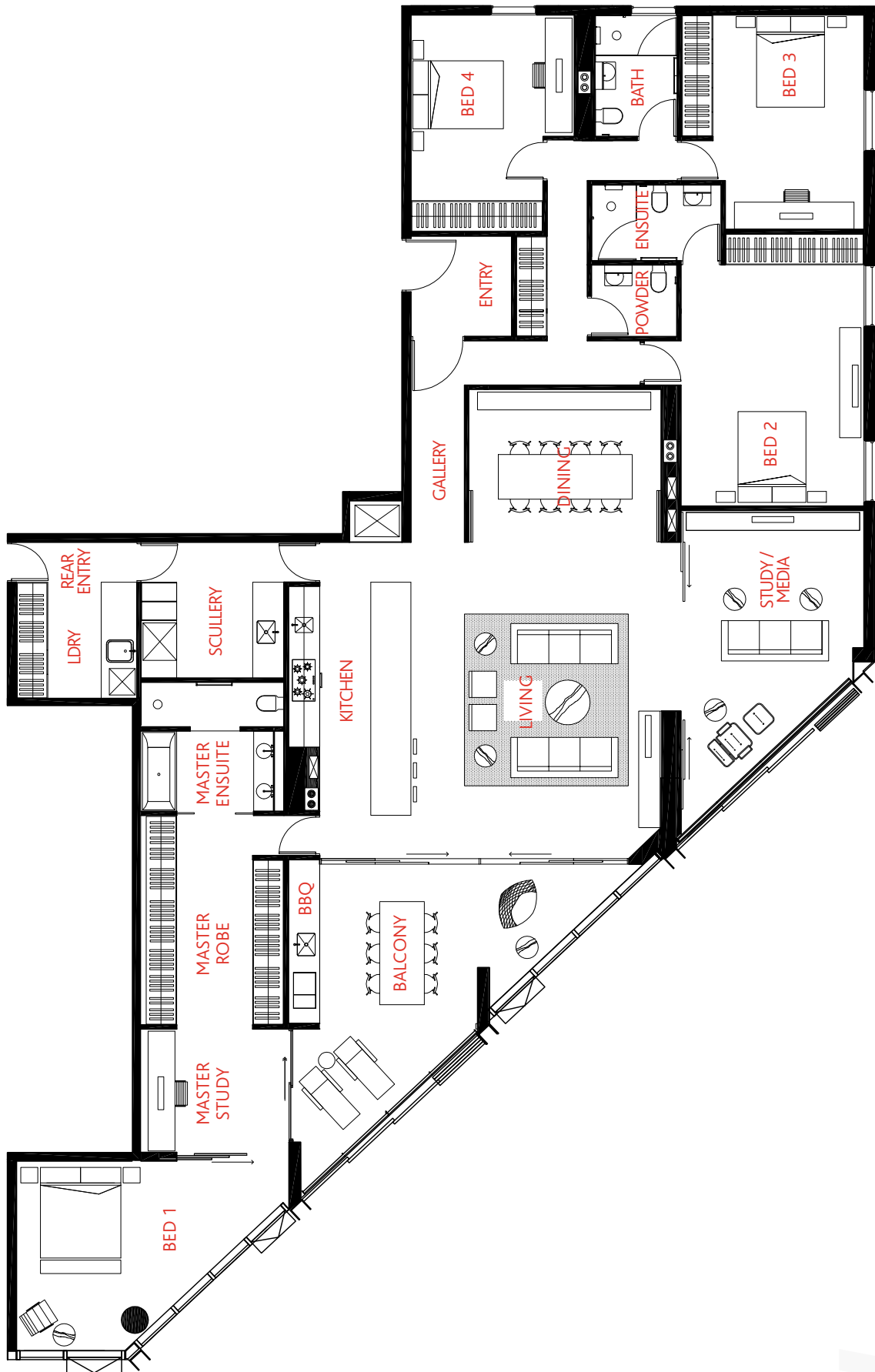
unique
ESTATES







FLOOR PLAN



LOCATION MAP

