



LAEM SOR VILLA 2

Breathtaking uninterrupted views

- Approximately 2,300sqm freehold house & land
- Southerly aspect and 96 metre water frontage
- 5 air-conditioned ensuited bedrooms (master with luxurious bath)
- Separate staff quarters
- 20m swimming pool with stunning views
- 28km from Samui International airport
- Short stroll to restaurants and shops of Thong Krut
- Offered fully furnished

With breathtaking, uninterrupted views of the Gulf of Thailand and a sought after Southerly aspect, this waterfront villa, located on the southerly tip of Koh Samui Island, is simply stunning.

Sitting on an almost 2,300 square metre lot, this 1,000 square metre house is set over three levels and offers five air-conditioned, ensuited bedrooms (the master with a luxurious bath), a kitchen with separate butler's pantry and expansive open-plan living areas that connect seamlessly with the alfresco terrace.

This fantastic waterfront property boasts wraparound verandas, a 20 metre infinity-edge pool and beautiful grounds incorporating water

For more information or to arrange an inspection please call Nicolette van Wijngaarden
M 0411 144 877 P +61 2 6680 9888 or 1300 911 720 E nicolette@uniqueestates.com.au
Website www.uniqueestates.com.au

Price USD\$ 3.5 million

 2  6  6  3+  2,277.6 m²



luxury properties



unique
ESTATES



features and 180 degree views. There are also separate staff quarters incorporating a sixth air-conditioned, ensuite bedroom. Other features include sauna, separate laundry and powder room, a double garage with both stair and lift access and generous storage throughout.

Laem Sor Villa comes fully furnished and is only 28 kilometres from Koh Samui International Airport and a short stroll from the shops and restaurants of Thong Krut.

For more information on this magnificent waterfront estate please contact Nicolette van Wijngaarden from Unique Estates on +61 411 144 877.



luxury properties



unique
ESTATES





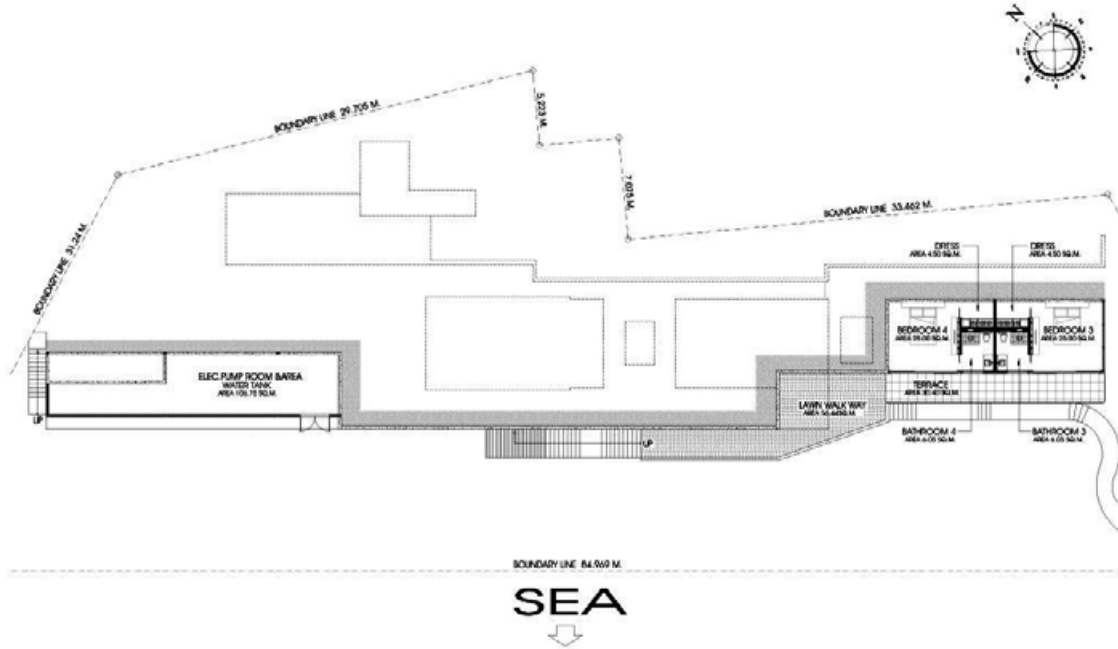


PROPERTY FACT SHEET

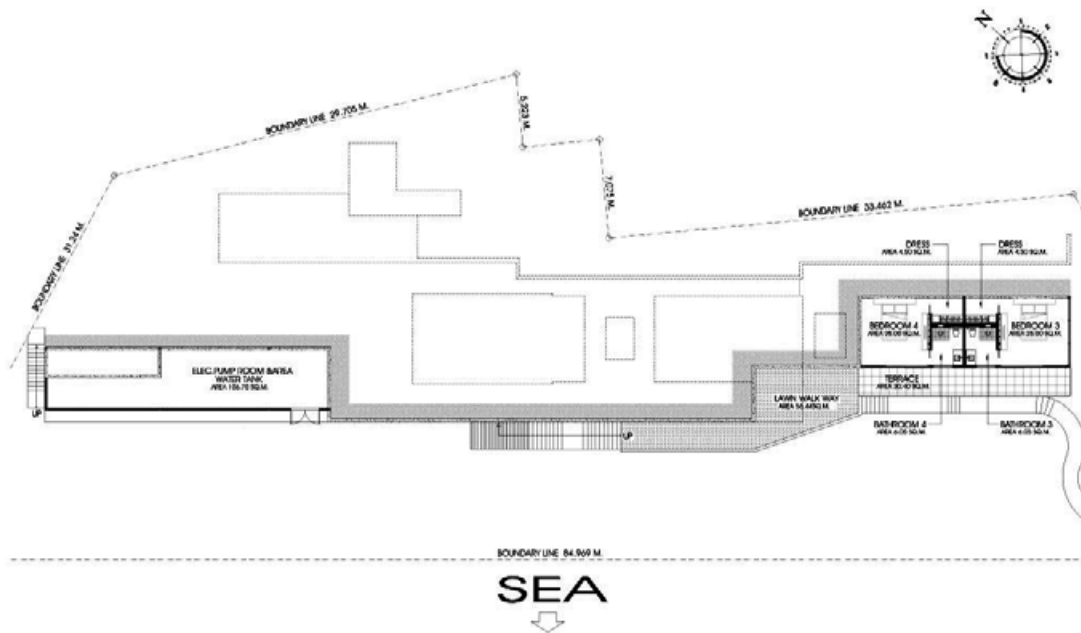
Aspect:	Southerly
Views:	Ocean, Koh Taen and Koh Madsum
Height above sea level:	29 mtr
Coordinates:	9° 24'38.34" 99° 57'48.99"
Construction:	Concrete and brick, terrazzo floors with some tiles in selected areas
Year Built:	completed early 2015
House Size:	1,013.79 square metres including garage, swimming pool, laundry
Pool:	20 x 4m
Water Supply:	Fresh water catchment. Reliable deep well and filtration system
Internet:	High speed broadband with Wi-Fi aerals positioned throughout
Mobile reception:	Good - depending on provider. Landline also available

FLOOR PLAN

LOWER GROUND FLOOR PLAN

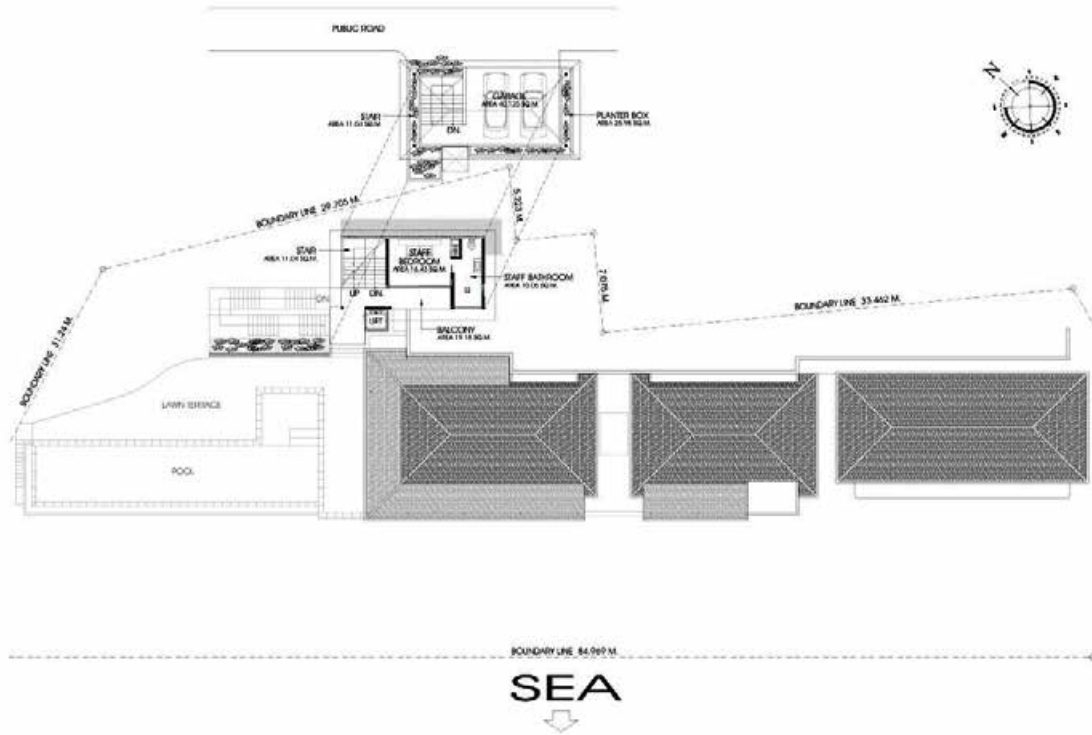


LOWER GROUND FLOOR PLAN



FLOOR PLAN

STAFF ROOM & GARAGE FLOOR PLAN



TAMBON TALING NGAM, AMPHOE KO SAMUI,
CHANG WAT SURAT THANI 84140, THAILAND

